



PRESS RELEASE

Windarra Minerals Ltd. (WRA.V) Intersects Broad Zones of Near-Surface Gold Mineralization on Mishi Leases

- up to 2.29 g/t over 12.4 m in new zone, and 1.03 g/t Au over 20.1 m at KK zone***
- located less than 3 km from Wesdome's Magnacon mill***

VANCOUVER June 9, 2011: Windarra Minerals Ltd. (the "Company") (TSX.V:WRA) is pleased to announce the results of a diamond drill program conducted between February and April at its 100% owned Mishi Leases property. The property is located approximately 50 km west of Wawa and is accessible by an all-weather road leading to Wesdome's Mishi-Magnacon milling complex, which largely processes ore from Wesdome's nearby Eagle River mine, and from the Mishi Open Pit, which is less than one km east of the Mishi Leases property boundary.

The drilling, totaling 3111 meters in 25 holes, intersected bulk tonnage-style gold mineralization similar to that at the Mishi Pit (see Table I and [Figures 1 to 3](#) for significant intersections). Two of the more significant intercepts are 32.0 m averaging 1.03 g/t Au, which includes 12.4 m at 2.29 g/t Au (hole M11-13), and 20.1 m averaging 1.03 g/t Au (hole M11-18). These intersections were from widely separate zones, with the former representing a new discovery, and the latter from the KK Zone, which has yielded a considerable number of significant intersections from previous drilling and channel sampling, and has excellent potential for developing a sizeable tonnage of mineralized material.

Drill targets for the 2011 program were located in four areas within the 3 km long Mishi Leases property. The targets were based in part on encouraging results returned from geophysical and soil geochemical surveys completed in late 2010 (see News Release dated Feb. 9, 2011). Other targets were outlined from a compilation of exploration results, largely from the 1980's and 1990's, in which approximately 40 holes were drilled across the property. The earlier programs returned very encouraging results, including drill intercepts and trench channel samples of both narrower high-grade mineralization and broad lower-grade "bulk-mineable"-style mineralized material.

The most encouraging results from the 2011 drilling were from holes M11-18 to 25, which targeted mineralization in the KK Zone on the western part of the property (see [Figures 1 and 2](#)). The KK Zone had been drilled previously and this year's drilling was designed to test continuity of mineralization along trend and down-dip. All eight holes intersected multiple zones of gold mineralization, with the most significant intervals being: 1.03 g/t Au over 20.1

m (hole M11-18), 0.77 g/t Au over 12.0 m (hole M11-20), 0.54 g/t Au over 20.9 m (hole M11-22), and 0.61 g/t Au over 20.6 m (hole M11-25). The results of drilling at the KK zone demonstrate that mineralization is continuous across broad widths and they have confirmed the near surface bulk-tonnage potential of the zone, which remains open both down-dip and along strike.

Drilling in the central part of the property yielded significant assays in hole M11-17 ([Figure 1](#)), which returned 2.96 g/t Au across 5.8 m from a zone that correlates well with a previous drill intersection averaging 2.49 g/t Au across 10.4 m 50 m to the northeast. Farther east, hole M11-13 was drilled beneath a trench across mineralization, intersecting a zone that averaged 1.03 g/t Au over an impressive 32.0 m and containing a higher grade section that assayed 2.29 g/t Au over 12.4 m. This new zone remains open in both directions along trend as well as down-dip.

Gold mineralization on the Mishi Leases is found in stacked, foliation-parallel, alteration zones of silica and sericite that host centimeter- to decimeter-scale quartz veins with small amounts of pyrite, pyrrhotite and rare arsenopyrite. The predominant host rocks are schistose and locally sheared metasedimentary rocks and mafic to intermediate tuff Rocks are metamorphosed to greenschist facies and are locally cut by post-mineral diabase dykes.

Future Work

The Company is planning further work at the Mishi Leases property. Detailed geological mapping and potential stripping and trenching are being considered in the vicinity of the KK zone, and infill soil geochemical sampling may be undertaken to help trace known mineralized zones and define new targets. Following these efforts, the Company intends to conduct further drilling, to test any new targets and to expand the known zones.

This Press Release was prepared by Daria Duba, M.Sc. and Charles Greig, M.Sc., PGeo., a Director of Windarra Minerals Ltd. and a "Qualified Person" as per NI43-101.

On behalf of the Board of Directors

"John Pallot"

President

For further information, please contact:

John Pallot, President
2300 – 1066 West Hastings Street, Vancouver, BC, V6E 3X2
Tel: (604) 688-1508 Fax: (604) 601-8253
Email: info@windarra.com, Website: www.windarra.com

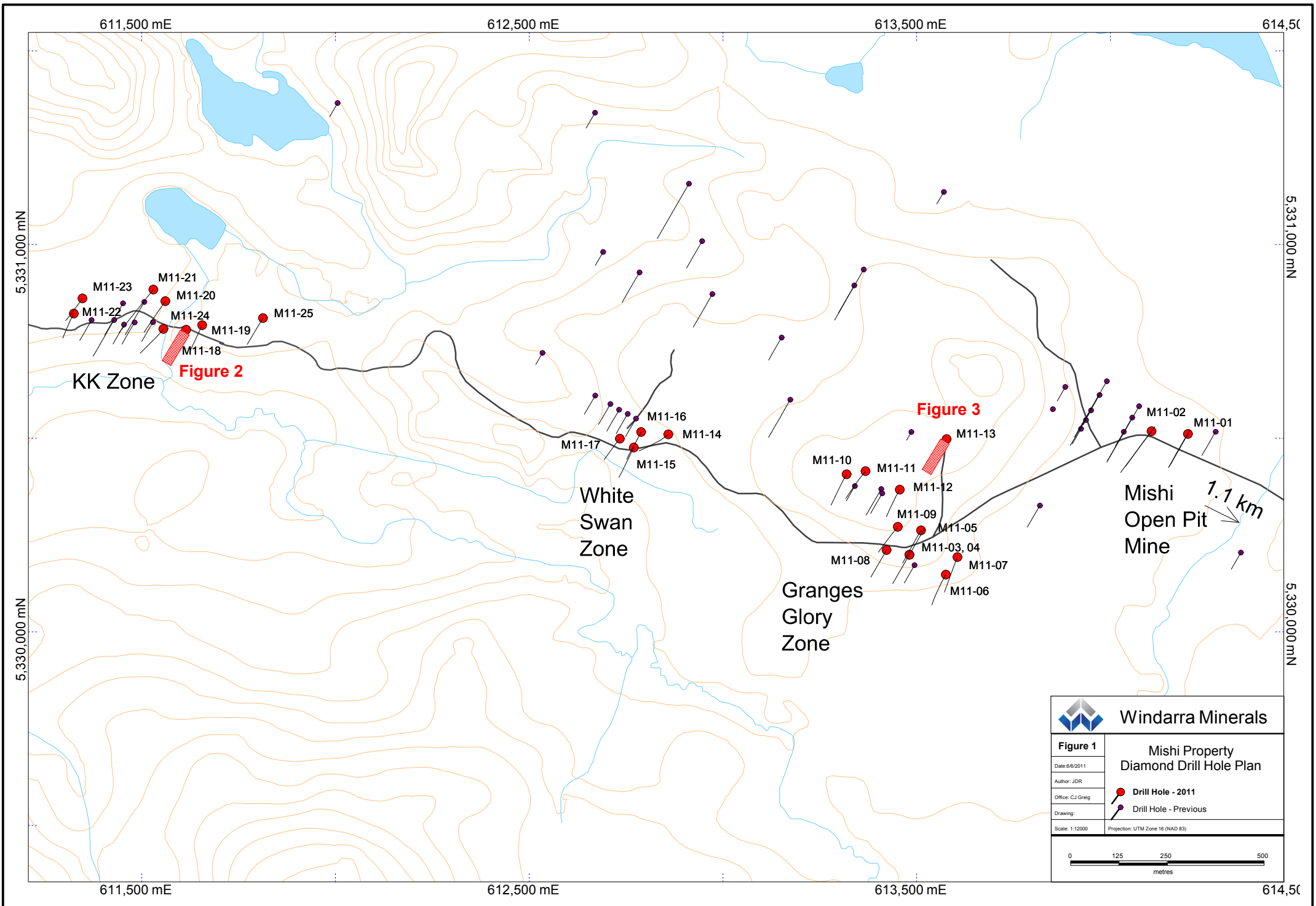
* * * * *


Neither TSX Venture Exchange nor its Regulation Services Provider (as that term is defined in the policies of the TSX Venture Exchange) accepts responsibility for the adequacy or accuracy of this release.

TABLE 1

Hole #	East (NAD 83)	North (NAD 83)	Az. (°)	Dip (°)	Depth (m)	From (m)	To (m)	Length (m)	Au * (g/t)	Target Area
M11-2	614106	5330518	210	-45	167.7	62.1	64.1	2.0	3.09	
M11-2						118.0	121.0	3.0	0.38	
M11-13	613577	5330498	210	-45	121.9	44.7	76.7	32.0	1.03	32W/07N
includes						46.5	58.9	12.4	2.29	
and						62.9	68.7	5.8	0.31	
M11-14	612859	5330510	230	-45	125.0	63.4	64.4	1.0	0.73	Trench H
M11-14						71.8	73.2	1.4	0.99	
M11-17	612734	5330499	210	-45	97.5	2.6	8.4	5.8	2.96	Trench H
M11-17						28.7	29.9	1.2	0.75	
M11-18	611615	5330780	210	-45	106.7	4.0	24.1	20.1	1.03	Trench B
M11-18						37.8	40.6	2.8	0.95	
M11-19	611656	5330792	210	-45	103.6	8.0	16.8	8.8	0.58	Trench B
M11-19						23.3	27.0	3.7	0.43	
M11-20	611561	5330854	210	-45	137.2	88.8	91.1	2.3	2.69	KK Zone
M11-20						112.8	124.8	12.0	0.77	
includes						114.8	120.8	6.0	1.30	
M11-21	611530	5330884	210	-50	221.3	130.3	136.1	5.8	0.47	KK Zone
M11-21						154.1	160.1	6.0	0.61	
M11-21						180.3	188.5	8.2	0.88	
M11-22	611325	5330822	210	-45	103.6	71.2	92.1	20.9	0.54	KK Zone
includes						71.2	79.9	8.7	0.84	
M11-23	611347	5330861	210	-45	112.8	96.0	99.8	3.8	0.43	KK Zone
M11-24	611556	5330782	210	-45	125.0	45.7	51.7	6.0	0.37	KK Zone
M11-24						69.0	75.0	6.0	0.33	
M11-25	611813	5330810	210	-45	108.5	8.8	16.8	8.0	0.39	KK Zone
M11-25						20.0	40.6	20.6	0.61	
includes						28.0	39.2	11.2	0.85	
M11-25						56.0	57.3	1.3	0.75	

*weighted averages



 Windarra Minerals	
Figure 1 Mishi Property Diamond Drill Hole Plan	
Date: 6/6/2011	<ul style="list-style-type: none"> ● Drill Hole - 2011 ● Drill Hole - Previous
Author: JDR	
Office: C.J. Greig	
Drawing:	
Scale: 1:12000	Projection: UTM Zone 16 (NAD 83)
